

# Balancing valves, steel

flange/flange, DN 15-300 PN 25

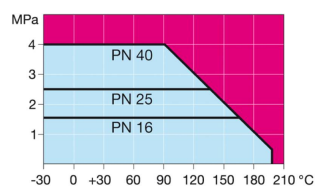
## Properties

Body:	Steel, EN 10217-2 P235GH (1.0345)
Ball:	Stainless steel, EN X5CrNi18-10 (1.4301)
Stem:	Stainless steel, EN X8CrNiS18-9 (1.4305)
Stem seals:	FPM
Ball seals:	Hardened PTFE
Flanges	EN 1092-1 Available PN 10, 16, 25, 40
Length	DIN 3202
Operation:	DN 15 - 150 with galvanized steel handle DN 200 - 300 with manual gear



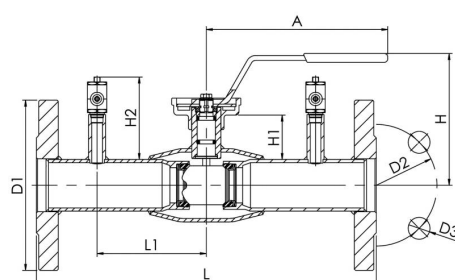
## Operating conditions

-30°C - +200°C  
Below 0 °C contact manufacturer

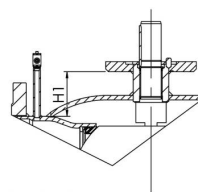


Not for steam

DN 15 - 150



DN 200 - 300



DN	PN body	PN flanges	Product no.	D1	D2	D3	H	H1	H2	A	L	L1	Holes	Kg
15	40	40	143 015	95	65	14	104	21	67,8	140	250	60	4	2,2
20	40	40	143 020	105	75	14	105	21	67,8	140	250	75	4	2,6
25	40	40	143 025	115	85	14	105	36	67,8	150	250	75	4	3,2
32	40	40	143 032	140	100	18	108	37	67,8	150	280	90	4	4,9
40	40	40	143 040	150	110	18	129	56	87,8	190	280	90	4	6,2
50	40	40	143 050	165	125	18	135	56	87,8	190	320	110	4	8
65	25	25	143 065/25	185	145	18	180	72	107,8	280	320	110	8	10,5
80	25	25	143 080/25	200	160	18	195	78	107,8	280	320	110	8	12,7
100	25	25	143 100/25	235	190	22	230	99	127,8	280	350	122,5	8	18,4
125	25	25	143 125/25	270	220	26	248	100	127,8	420	350	132,5	8	26,6
150	25	25	143 150/25	300	250	26	283	106	127,8	600	370	145	8	35,8
200	25	25	143 200/25	360	310	26	-	72	127,8	-	425	169	12	64
250	25	25	143 250/25	425	370	30	-	88	127,8	-	550	225	12	120
300	25	25	143 300/25	485	430	30	-	113	109,9	-	580	272	16	176