

Balancing valves, stainless steel

flange/flange, DN 15-250 PN 25

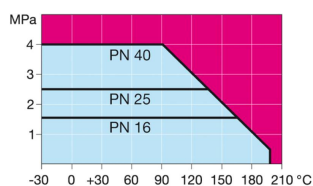
Properties

Body:	Stainless steel, EN 10217-7 X2CrNiMo17-12-2 (1.4404)
Ball:	Stainless steel, EN X2CrNiMo17-12-2 (1.4404)
Stem:	Stainless steel, EN X2CrNiMo17-12-2 (1.4404)
Stem seals:	FPM/NBR
Measuring points:	Stainless steel EN X2CrNiMo17-12-2 (1.4404)
Ball seals:	Hardened PTFE
Flanges	EN 1092-1 Available PN 10, 16, 25, 40
Length	DIN 3202
Operation:	DN 15 - 125 with stainless steel handle DN 150 with galvanized steel handle DN 200 - 250 with manual gear

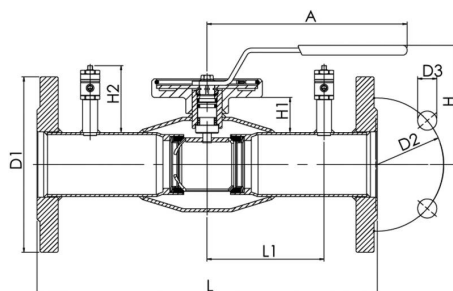


Operating conditions

-30° - +200°
Below 0 °C contact manufacturer



Not for steam



DN	PN body	PN flanges	Product no.	D1	D2	D3	H	H1	H2	A	L	L1	Holes	Kg
15	40	40	243 015	95	65	14	105	21	65,7	140	250	60	4	2,1
20	40	40	243 020	105	75	14	105	21	62,9	140	250	75	4	2,6
25	40	40	243 025	115	85	14	95	27	54,4	150	250	75	4	3,1
32	40	40	243 032	140	100	18	100	26	54,4	150	280	90	4	4,7
40	40	40	243 040	150	110	18	105	33	64,4	190	280	90	4	5,9
50	40	40	243 050	165	125	18	115	33	64,4	190	320	110	4	7,6
65	25	25	243 065/25	185	145	18	165	52	92,9	280	320	110	8	11
80	25	25	243 080/25	200	160	18	175	58	94,4	280	320	110	8	13,5
100	25	25	243 100/25	235	190	22	190	58	94,4	280	350	122,5	8	19,5
125	25	25	243 125/25	270	220	26	210	60	94,4	420	350	132,5	8	28
150	25	25	243 150/25	300	250	26	240	66	94,4	600	370	145	8	36
200	25	25	243 200/25	360	310	26	-	72	134,4	-	425	168	12	57
250	25	25	243 250/25	425	370	30	-	88	134,4	-	550	225	12	100