

# Steel ball valves, full bore

welding/welding, EN (DIN), DN 600-800

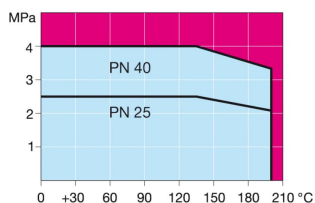
## Properties

Body:	Steel, P355 NL1 (1.0566)/GP240GH (1.0619)
Ball:	Steel + stainless plating, ASTM A350 LF2 +Ni
Stem:	Stainless steel, EN X8CrNiS18-9 (1.4305)
Stem seals:	FPM
Ball seals:	Carbonized PTFE
Standard equipment:	As standard valve is delivered with lifting lugs, drain valve and mounting stand.
Operation:	Valves are available with manual gear, electric actuator or hydraulic actuator.



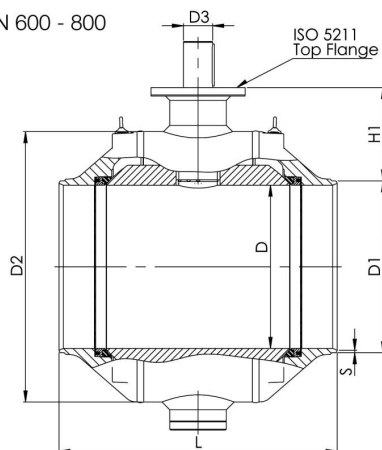
## Operating conditions

-30°C - +200°C  
Below 0 °C contact manufacturer



Not for steam

DN 600 - 800



DN	PN	Product no.	D	D1	D2	D3	S	H1	H2	HS1	LS1	LS2	L	ISO 5211	Kv	Kg
600	25	150 600	589	610	965	100	7,1	387	592	616	560	965	1065	F35	82000	2350
700	25	150 700	684	711	1125	120	8	417	684	709	700	1028	1205	F35	120000	3450
800	25	150 800	779	813	1290	140	8,8	449	779	799	680	1290	1330	F40	174000	5150

Available also PN40